

Diaphragm



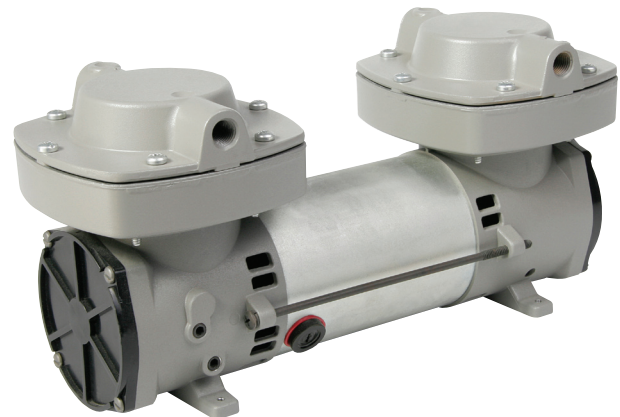
910 & 2907 SERIES

MODELS

Standard models
910CDC22/12
2907CDC22/12



910CDC22/12



2907CDC22/12

FEATURES

- Oil-less operation
- Permanently lubricated bearings
- Field service capability
- Stainless steel valves and aluminum valve plate
- Lightweight die-cast aluminum head and diaphragm hold down plate
- Long-life diaphragm
- Inlet filter
- Balanced for smooth, low vibration operation
- Replaceable brushes (910 only)
- Service Kit SK927 (910 only)

Consult factory for custom applications

ISO 9001
CERTIFIED

THOMAS
A Gardner Denver Product

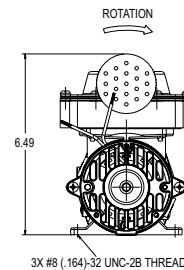
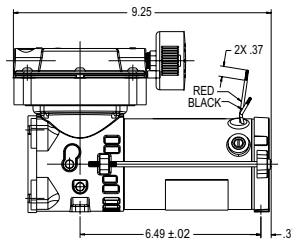
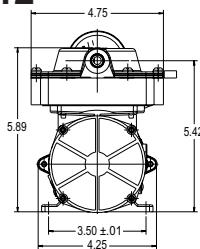
910 & 2907 Series Performance Data

		Standard		Standard	
MODEL NUMBER		910CDC22/12		2907CDC22/12	
HEAD CONFIGURATION		Pressure/Vacuum		Pressure/Vacuum	
STROKE		.220 Inches		.220 Inches	
PRESSURE		Flow @ 12V		Flow @ 12V	
cfm @ psi	l/min @ bar				
psi	bar	cfm	l/min	cfm	l/min
0	0	1.97	55.8	3.20	90.6
5	.5	1.72	45.5	2.89	77.2
10	1.0	1.47	37.0	2.53	63.5
15	1.5	1.29	29.7	2.21	
20	2.0	1.10	23.7		
25	3.0	.95	10.4		
30	5.0	.79			
35	7.0	.64			
40	10.0	.48			
MAX. CONTINUOUS PRESSURE		25 psi	1.7 bar	15 psi	1.0 bar
MAX. INTERMITTENT PRESSURE		40 psi	2.8 bar	15 psi	1.0 bar
VACUUM		Flow @ 12V		Flow @ 12V	
cfm @ in.Hg	l/min @ mbar (gauge)				
in.Hg	mbar (gauge)	cfm	l/min	cfm	l/min
0	0	1.97	55.8	3.20	90.6
5	-100	1.53	48.4	2.00	70.5
10	-200	1.05	40.9	1.43	53.7
15	-400	.65	25.6	.90	35.1
20	-600	.28	12.7	.41	17.9
MAX. VACUUM		24.3 in.Hg	-824mbar	24.0 in.Hg	-813 mbar
MAX. AMBIENT AIR TEMP.		104° F	40°C	104° F	40°C
MIN. AMBIENT START TEMP.		50° F	10°C	50° F	10°C
MAX. RESTART PRESSURE		20 psi	1.4 bar	15 psi	1.0 bar
MAX. RESTART VACUUM		24.3 in.Hg	-824mbar	24.0 in.Hg	-813 mbar
MOTOR VOLTAGE/FREQUENCY		12V DC		12V DC	
MOTOR TYPE		Permanent Magnet		Permanent Magnet	
CURRENT AT RATED LOAD (AMPS)		12.8A		20.0A	
POWER AT RATED LOAD (WATTS)					
STARTING CURRENT (LOCKED ROTOR, AMPS)		96.6W		120.0W	
MIN. FULL LOAD SPEED (RPM)		2160rpm		1900rpm	
THERMAL PROTECTOR		No		No	
NET WEIGHT		8.25 lb	3.7 kg	11 lb	5.0 Kg

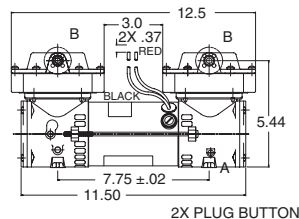
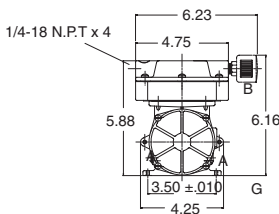
The information presented in this material is based on technical data and test results of nominal units. It is believed to be accurate and reliable and is offered as an aid to help in the selection of Thomas products. It is the responsibility of the user to determine the suitability of the product for his intended use and the user assumes all risk and liability whatsoever in connection therewith. Thomas does not warrant, guarantee or assume any obligation or liability in connection with this information.

NOTE: Models pictured are representative of the series and do not represent a specific model number. Consult factory for detailed physical description.

910CDC22/12



2907CDC22/12



PLUG BUTTONS

4X #8 (.164)-32 UNC-2B THREAD

Motor shell to be positioned rotationally so brush holder will be opposite two vent windows above motor bolt

THOMAS
A Gardner Denver Product