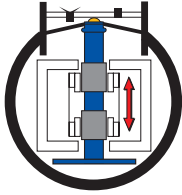


## LINEAR



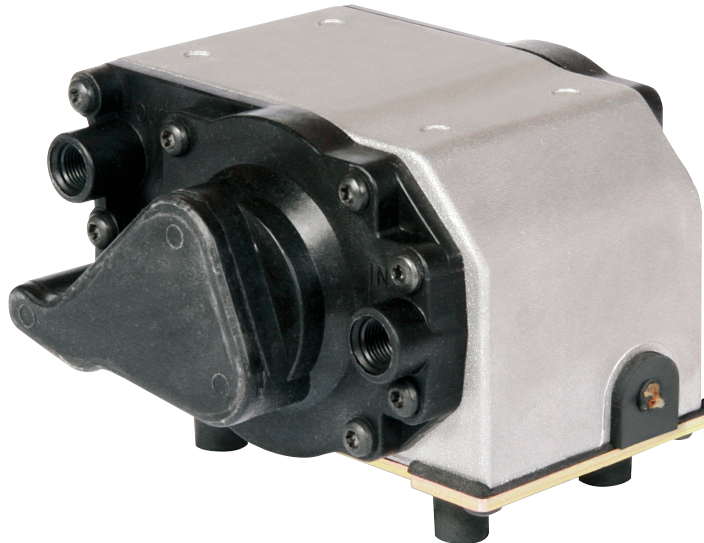
# 6000 SERIES

## MODELS

6025SE	150057
6025SE/230VAC	150058
6015SE	150098
6015SE/100	150101
6015SE/230	150102
6025SE/12VDC	150108
6025SE/24VDC	150109
6025SE/12VDC*	150112
6025SE/24VDC*	150113
6025SE/100-115/230**	150128
6025SE-XP/230	150129

\* includes control input leads

\*\* 4-wire select voltage



## FEATURES

- Low power consumption
- High efficiency
- Quiet operation
- Low starting current
- Low vibration
- Low pulsations
- Few moving parts
- No bearings
- Available with optional 4-20 mA controller input (DC Models)

## BENEFITS

- Low operating cost
- Oil-less design
- Low noise - no expensive sound insulation required
- Low operating temperatures
- No need for pulsation chamber
- Less friction and heat — longer life
- Variable Output (with control input option) DC Models

ISO 9001  
CERTIFIED

**THOMAS**  
A Gardner Denver Product

# 6000 Series Performance Data

MODEL NUMBERS		6015SE				6015SE				6015SE			
MANUFACTURING CODE		150101				150102				150098			
HEAD CONFIGURATION		Pressure/Vacuum				Pressure/Vacuum				Pressure/Vacuum			
PRESSURE		Flow @ 100/60				Flow @ 230/50				Flow @ 115/60			
cfm @ psi	l/min @ bar	cfm	l/min	AMPS	WATTS	cfm	l/min	AMPS	WATTS	cfm	l/min	AMPS	WATTS
0	0	1.10	31.1	0.23	15	1.10	31.1	0.12	15	1.10	31.1	0.23	15
1	.1	0.62	10.5	0.23	12	0.62	10.5	0.12	12	0.62	10.5	0.23	12
2	.2	0.09		0.24	9	0.09		0.12	9	0.09		0.24	9
3	.3												
<b>MAX. CONTINUOUS PRESSURE</b>		2.0 psi		0.14 bar		2.0 psi		0.14 bar		2.0 psi		0.14 bar	
<b>MAX. INTERMITTENT PRESSURE</b>		2.3 psi		0.16 bar		2.3 psi		0.16 bar		2.3 psi		0.16 bar	
VACUUM		Flow @ 100/60				Flow @ 230/50				Flow @ 115/60			
cfm @ in.Hg	l/min @ mbar (gauge)	cfm	l/min	AMPS	WATTS	cfm	l/min	AMPS	WATTS	cfm	l/min	AMPS	WATTS
0	0	1.10	31.0	0.24	15	1.10	31.0	0.12	15	1.10	31.0	0.24	15
2	-50	0.63	18.0	0.24	12	0.63	18.0	0.12	12	0.63	18.0	0.24	12
4	-100	0.10	9.0	0.24	9	0.10	9.0	0.12	9	0.10	9.0	0.24	9
6	-150		1.0				1.0				1.0		
8	-200												
<b>MAX. CONTINUOUS VACUUM</b>		4in.Hg		140 mbar		4in.Hg		140 mbar		4in.Hg		140 mbar	
<b>MAX. RESTART VACUUM</b>		4.75in.Hg		160 mbar		4.75in.Hg		160 mbar		4.75in.Hg		160 mbar	
<b>MAX. AMBIENT TEMPERATURE</b>		104°F		40°C		104°F		40°C		104°F		40°C	
<b>MIN. AMBIENT TEMPERATURE</b>		32°F		0°C		32°F		0°C		32°F		0°C	
<b>MOTOR VOLTAGE/FREQUENCY</b>		110/60/50/1				230/60/50/1				115/60/50/1			
<b>THERMAL PROTECTOR</b>		Single Trip				Single Trip				Single Trip			
<b>NET WEIGHT</b>		2.7 lb		1.2 (kg)		2.7 lb		1.2 (kg)		2.7 lb		1.2 (kg)	
<b>SHIP WEIGHT</b>		3.8 lb		1.7 (kg)		3.8 lb		1.7 (kg)		3.8 lb		1.7 (kg)	

# 6000 Series Performance Data

MODEL NUMBERS		6025SE/12VDC				6025SE/24VDC				6025SE				6025SE			
<b>MANUFACTURING CODE</b>		150108 150112*				150109 150113*				150057 150128 @ 115v				150058 150128 @ 230v			
<b>HEAD CONFIGURATION</b>		Pressure/Vacuum				Pressure/Vacuum				Pressure/Vacuum				Pressure/Vacuum			
<b>PRESSURE</b>		Flow @ 12VDC				Flow @ 24VDC				Flow @ 115/60				Flow @ 230/50			
cfm @ psi	l/min @ bar	cfm	l/min	AMPS	WATTS	cfm	l/min	AMPS	WATTS	cfm	l/min	AMPS	WATTS	cfm	l/min	AMPS	WATTS
0	0	1.50	42.5	2.7	36	1.50	42.5	1.5	36	2.00	56.6	0.46	32	2.00	56.6	0.25	40
1	.1	1.08	28.0	2.5	30	1.08	28.0	1.3	30	1.62	40.5	0.45	16	1.62	40.5	0.23	36
2	.2	0.73	12.5	2.1	25	0.73	12.5	1.1	25	1.20	23.0	0.43	12	1.20	23.0	0.22	32
3	.3	0.41	2.1	1.8	22	0.41	2.1	0.8	22	0.70	7.0	0.39	7	0.70	7.0	0.20	24
4		0.16		1.5	18	0.16		0.7	18	0.38		0.37	7	0.38		0.19	17
<b>MAX. CONTINUOUS PRESSURE</b>		4.0 psi		0.28 bar		4.0 psi		0.28 bar		4.0 psi		0.28 bar		4.0 psi		0.28 bar	
<b>MAX. INTERMITTENT PRESSURE</b>		4.5 psi		0.31 bar		4.5 psi		0.31 bar		4.7 psi		0.32 bar		4.7 psi		0.32 bar	
<b>VACUUM</b>		Flow @ 12VDC				Flow @ 24VDC				Flow @ 115/60				Flow @ 230V 50Hz			
cfm @ in.Hg	l/min @ mbar (gauge)	cfm	l/min	AMPS	WATTS	cfm	l/min	AMPS	WATTS	cfm	l/min	AMPS	WATTS	cfm	l/min	AMPS	WATTS
0	0	1.50	42.5	2.7	36	1.50	42.5	1.5	36	2.00	56.6	0.46	32	2.00	56.6	0.46	40
2	-50	1.09	34.0	2.5	30	1.09	34.0	1.3	30	1.62	48.8	0.45	16	1.62	48.8	0.45	36
4	-100	0.74	26.0	2.1	25	0.74	26.0	1.1	25	1.25	40.5	0.43	12	1.25	40.5	0.43	32
6	-150	0.43	19.0	1.8	22	0.43	19.0	0.8	22	0.80	31.8	0.38	7	0.80	31.8	0.38	24
8	-200	0.17	12.5	1.5	18	0.17	12.5	0.7	18	0.35	23.0	0.37	7	0.35	23.0	0.37	17
<b>MAX. CONTINUOUS VACUUM</b>		8in.Hg		-271 mbar		8in.Hg		-271 mbar		8in.Hg		-271 mbar		8in.Hg		-271 mbar	
<b>MAX. RESTART VACUUM</b>		8in.Hg		-271 mbar		8in.Hg		-271 mbar		9in.Hg		-305 mbar		9in.Hg		-305 mbar	
<b>MAX. AMBIENT TEMPERATURE</b>		104°F		40°C		104°F		40°C		104°F		40°C		104°F		40°C	
<b>MIN. AMBIENT TEMPERATURE</b>		32°F		0°C		32°F		0°C		32°F		0°C		32°F		0°C	
<b>MOTOR VOLTAGE/FREQUENCY</b>		12VDC				24VDC				100-115/60/50/1				230/50/60/1			
<b>THERMAL PROTECTOR</b>		No				No				Single Trip				Single Trip			
<b>NET WEIGHT</b>		3.3 lb		1.5 (kg)		3.3 lb		1.5 (kg)		3.3 lb		1.5 (kg)		3.3 lb		1.5 (kg)	
<b>SHIP WEIGHT</b>		4.2 lb		1.9 (kg)		4.2 lb		1.9 (kg)		4.2 lb		1.9 (kg)		4.2 lb		1.9 (kg)	

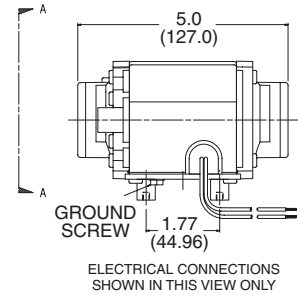
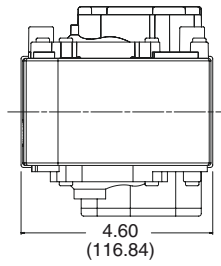
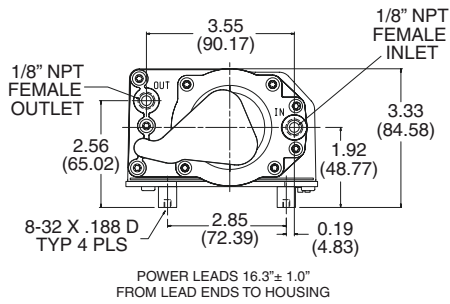
MODEL NUMBERS		6025SE-XP **			
<b>MANUFACTURING CODE</b>		150129			
<b>HEAD CONFIGURATION</b>		Pressure/Vacuum			
<b>PRESSURE</b>		Flow @ 230/50			
cfm @ psi	l/min @ bar	cfm	l/min	AMPS	WATTS
0	0	2.10	59.5	0.22	32
1	.1	1.80	47.0	0.24	34
2	.2	1.42	26.0	0.24	33
3	.3	1.00	13.0	0.25	30
4		0.50		0.26	23
<b>MAX. CONTINUOUS PRESSURE</b>		4.0 psi		0.28 bar	
<b>MAX. INTERMITTENT PRESSURE</b>		5.5 psi		0.38 bar	
<b>VACUUM</b>		Flow @ 230V 50Hz			
cfm @ in.Hg	l/min @ mbar (gauge)	cfm	l/min	AMPS	WATTS
0	0	2.10	59.5	0.22	32
2	-50	1.80	53.0	0.24	34
4	-100	1.42	47.0	0.24	33
6	-150	1.00	37.0	0.25	30
8	-200	0.50	26.0	0.26	23
<b>MAX. CONTINUOUS VACUUM</b>		8in.Hg		-271 mbar	
<b>MAX. RESTART VACUUM</b>		11in.Hg		-373 mbar	
<b>MAX. AMBIENT TEMPERATURE</b>		104°F		40°C	
<b>MIN. AMBIENT TEMPERATURE</b>		32°F		0°C	
<b>MOTOR VOLTAGE/FREQUENCY</b>		230/50/60/1			
<b>THERMAL PROTECTOR</b>		Single Trip			
<b>NET WEIGHT</b>		3.3 lb		1.5 (kg)	
<b>SHIP WEIGHT</b>		4.2 lb		1.9 (kg)	

\* indicates unit with control input option

\*\* **ATTENTION:** 6025SE-XP MODELS MUST OPERATE AGAINST A BACK PRESSURE OF 160 mbar / 2.3 psi MINIMUM. DO NOT OPERATE WITHOUT A LOAD.

# Dimensions Millimeters are in ( )

## 6025SE



WIRING LEGEND					
	12VDC	24VDC	24VAC	115 VAC	230 VAC
<b>Black</b>	(-)	(-)	X	X	X
<b>White</b>			X	X	X
<b>Red</b>	(+)				
<b>Yellow</b>		(+)			
<b>Gray &amp; Blue — 4-20 mA control input leads</b>					

The information presented in this material is based on technical data and test results of nominal units. It is believed to be accurate and reliable and is offered as an aid to help in the selection of Thomas products. It is the responsibility of the user to determine the suitability of the product for his intended use and the user assumes all risk and liability whatsoever in connection therewith. Thomas does not warrant, guarantee or assume any obligation or liability in connection with this information.

**NOTE:** Models pictured are representative of the series and do not represent a specific model number. Consult factory for detailed physical description.



**Thomas Products Division**  
 3524 Washington Ave  
 Sheboygan, WI 53081 USA  
 Phone: (920) 457-4891  
 Fax: (920) 451-4276  
[www.gd-thomas.com](http://www.gd-thomas.com)