

DIAPHRAGM



Diaphragm Pumps

MODELS

2002
3003
3013
5002



FEATURES

- Oil-less
- Maintenance free
- Balanced for smooth low vibration operation
- Low noise level
- Small
- Light weight
- High efficiency

TYPICAL APPLICATIONS

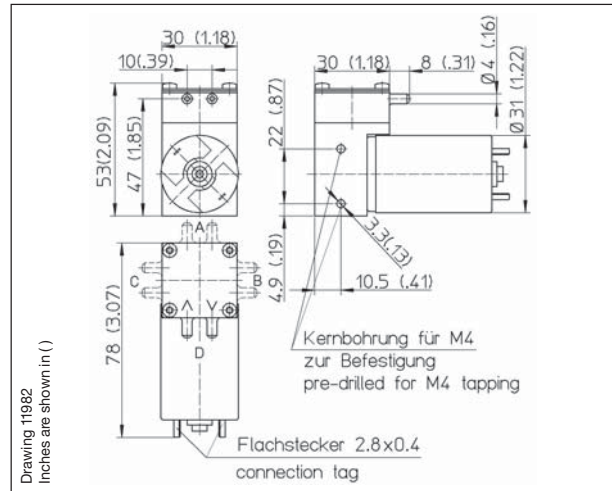
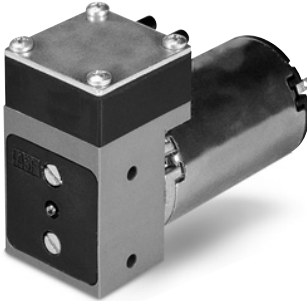
- Patient monitoring
- Anaesthetic control
- Gas detection devices
- Personal protection devices
- Flue gas measurement
- Pipetting devices



THOMAS
A Gardner Denver Product

Diaphragm Pump 5002 VD DC

Flow	2,2 l/min
Max. pressure	1,5 bar
Max. vacuum	-550 mbar



Pneumatic Data

Description	5002VD/0,8/N/DC	5002VD/1,0/N/DC	5002VD/1,2/N/DC
Part number	50020360	50020397	50020425
6 V	50020368	50020408	50020434
12 V	50020384	50020416	50020444
24 V			
Max. flow	1,5 l/min	2,0 l/min	2,2 l/min
Max. intermittent duty	0,7 bar	1,2 bar	1,5 bar
Max. continuous pressure	0,3 bar	0,3 bar	0,3 bar
Max. restart pressure	0,7 bar	1,2 bar	1,5 bar
Max. vacuum	-350 mbar	-500 mbar	-550 mbar
Max. restart vacuum	-350 mbar	-500 mbar	-550 mbar

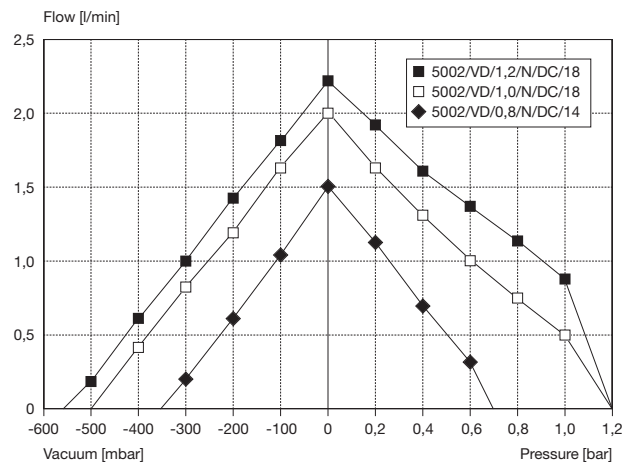
Electrical Data

Motor type	Permanent magnet	Permanent magnet	Permanent magnet
Nominal speed	3000 rpm	3000 rpm	3000 rpm
Rated power	6 V/380 mA	6V/680 mA	6 V/840 mA
	12 V/190 mA	12 V/340 mA	12 V/420 mA
	24 V/95 mA	24 V/170 mA	24 V/210 mA
Protection class	IP00	IP00	IP00
Bearing type	Sleeve bearing	Sleeve bearing	Sleeve bearing

General Data

Ambient temperature	10 to 50 °C	10 to 50 °C	10 to 50 °C
Media temperature	10 to 60 °C	10 to 60 °C	10 to 60 °C
Weight	190 g	190 g	190 g
Port direction	D	D	D
Hold down plate	Ø14	Ø18	Ø18

Flow Curves



Wetted parts

Pump head	Polyarylamide
Diaphragm, valves	NBR
Diaphragmplate, screw	St, galvanized

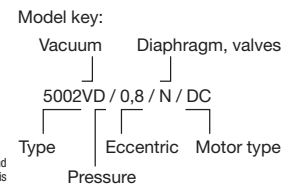
Options

Polyphenylsulfide (PPS)
EPDM, PTFE, FPM (Viton®)
Stainless steel

Options

Bearing type	Ball bearing
--------------	--------------

5002...	Stock programme
---------	-----------------



The information presented in this material is based on technical data and test results of nominal units. It is believed to be accurate and reliable and is offered as an aid to help in the selection of Thomas products. It is the responsibility of the user to determine the suitability of the product for the intended use and the user assumes all risk and liability whatsoever in connection therewith. Thomas does not warrant, guarantee or assume any obligation or liability in connection with this information.