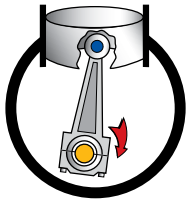


## Articulating Piston



# TASKAIR™ (TA) SERIES

## 1/12, 1/6, 1/4, 1/3, 1/2, 3/4 & 1.0 HP

### MODELS

TA-2101-DC (270046)  
 TA-3101-DC (270024)  
 TA-4101-DC (270025)  
 TA-4101-DC (270047)  
 TA-5102-DC (270058)

TA-5102E (270063)  
 TA-5102E (270064)  
 TA-6102E (270066)

TA-1061 (270000)  
 TA-1061 (270026)  
 TA-2051 (270013)  
 TA-2051 (270028)  
 TA-2101 (270003)  
 TA-2101 (270004)  
 TA-2101 (270029)  
 TA-3051 (270002)  
 TA-3051 (270031)  
 TA-3101 (270005)  
 TA-3101 (270033)  
 TA-3052 (270006)  
 TA-3052 (270032)  
 TA-5052 (270008)  
 TA-5052 (270039)  
 TA-5102 (270011)  
 TA-5102 (270040)  
 TA-5102 (270043)  
 TA-5102 (270058)  
 TA-4051 (270014)  
 TA-4101 (270015)  
 TA-4052 (270007)  
 TA-4052 (270035)  
 TA-4102 (270010)  
 TA-6052 (270009)  
 TA-6052 (270041)  
 TA-6102 (270012)  
 TA-6102 (270042)  
 TA-6102 (270044)  
 TA-7102 (270045)  
 TA-7102 (270048)  
 TA-4172 (270072)  
 TA-5172 (270078)  
 TA-5172 (270073)  
 TA-5172 (270076)  
 TA-6172 (270080)  
 TA-6172 (270082)  
 TA-3V2 (270018)  
 TA-3V2 (270034)  
 TA-4V2 (270019)  
 TA-4V2 (270038)  
 TA-5V2 (270083)

ISO 9001  
 CERTIFIED



TA-1061: 270000  
 270026

TA-2051: 270013  
 270028

TA-2101: 270003  
 270004  
 270029



TA-3051: 270002  
 270031

TA-3101: 270005  
 270033



TA-3051: 270002  
 270031

TA-3101: 270005  
 270033



TA-5102DC: 270058



TA-2101DC: 270046

TA-3101DC: 270024

TA-4101DC: 270025  
 270047

TA-4051DC: 270059  
 270060



TA-5052: 270008  
 270039

TA-5102: 270011  
 270040  
 270043  
 270058

TA-6052: 270009  
 270041

TA-6102: 270012  
 270042  
 270044



TA-7102: 270045  
 270048



TA-3052: 270006  
 270032

TA-4052: 270007  
 270035

TA-4102: 270010

### FEATURES

- Oil-less design
- Permanently lubricated and sealed bearings
- Cast iron cylinders
- High strength stainless steel valves
- PTFE piston rings and skirts
- Long, service-free life
- Field service capability
- Totally enclosed fan cooled motor
- Low vibration
- Single-point intake
- Quiet operation
- Low profile
- Resistant to dust & water
- Fifty-micron inlet filter(s)
- Motor Frame 48 and 56

Consult factory for custom applications



TA-4172: 270072

TA-5172: 270078  
 270073  
 270076

TA-6172: 270080  
 270082

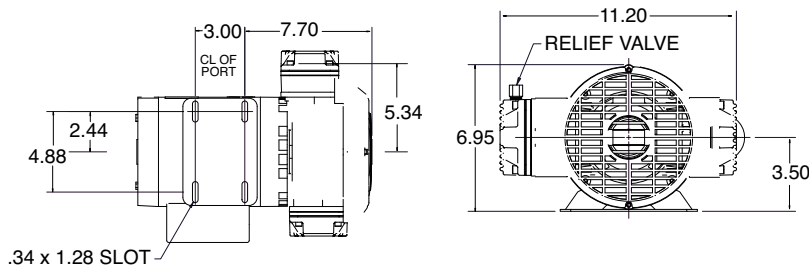
**THOMAS**  
 A Gardner Denver Product

# 1/3, 1/2, 3/4 TA Performance Data

MODEL NUMBER		TA-4172		TA-5172		TA-5172		TA-5172		TA-6172		TA-6172	
MANUFACTURING CODE		270072		270078		270073		270076		270080		270082	
HEAD CONFIGURATION		Pressure		Pressure		Pressure		Pressure		Pressure		Pressure	
NUMBER OF CYLINDERS		2		2		2		2		2		2	
PRESSURE		Flow @ 115/60		Flow @ 115/60		Flow @ 220/50		Flow @ 230/60		Flow @ 115/60		Flow @ 230/60	
CFM @ PSI	LPM @ bar												
PSI	bar	CFM	LPM	CFM	LPM	CFM	LPM	CFM	LPM	CFM	LPM	CFM	LPM
0	0	1.40	39.6	1.80	50.9	1.43	40.4	1.80	50.9	2.40	67.9	2.40	67.9
5	.5	1.39	39.2	1.79	50.6	1.42	40.2	1.79	50.6	2.39	67.6	2.39	67.6
10	1.0	1.38	38.5	1.79	50.4	1.42	39.9	1.79	50.4	2.39	67.1	2.39	67.1
15	1.5	1.36	38.0	1.78	50.3	1.41	39.8	1.78	50.3	2.37	67.0	2.37	67.0
20	2.0	1.35	37.4	1.78	50.1	1.41	39.6	1.78	50.1	2.37	66.8	2.37	66.8
25	3.0	1.33	36.5	1.77	49.5	1.40	39.2	1.77	49.5	2.36	66.1	2.36	66.1
30	5.0	1.32	34.4	1.77	48.0	1.40	38.4	1.77	48.0	2.36	64.9	2.36	64.9
35	7.0	1.31	32.5	1.76	46.5	1.39	37.3	1.76	46.5	2.35	63.5	2.35	63.5
40		1.30		1.75		1.39		1.75		2.34		2.34	
50		1.27		1.75		1.38		1.75		2.33		2.33	
60		1.25		1.72		1.37		1.72		2.31		2.31	
70		1.22		1.70		1.36		1.70		2.30		2.30	
80		1.20		1.69		1.35		1.69		2.28		2.28	
90		1.18		1.67		1.34		1.67		2.26		2.26	
100		1.15		1.65		1.32		1.65		2.25		2.25	
110		1.14		1.62		1.31		1.62		2.22		2.22	
120		1.12		1.61		1.30		1.61		2.21		2.21	
130		1.10		1.60		1.28		1.60		2.20		2.20	
140		1.08		1.58		1.26		1.58		2.18		2.18	
150		1.05		1.55		1.24		1.55		2.15		2.15	
<b>MAX. PRESSURE</b>		175 PSI	12 bar	175 PSI	12 bar	175 PSI	12 bar	175 PSI	12 bar	175 PSI	12 bar	175 PSI	12 bar
<b>MAX. AMBIENT AIR TEMP.</b>		40°C	104° F	40°C	104° F	40°C	104° F	40°C	104° F	40°C	104° F	40°C	104° F
<b>MIN. AMBIENT START TEMP.</b>		0°C	32° F	0°C	32° F	0°C	32° F	0°C	32° F	0°C	32° F	0°C	32° F
<b>MAX. RESTART PRESSURE</b>		175 PSI	12 bar	175 PSI	12 bar	175 PSI	12 bar	175 PSI	12 bar	175 PSI	12 bar	175 PSI	12 bar
<b>MOTOR VOLTAGE/FREQUENCY</b>		115/230/60/1		115/230/60/1		110/220/240/50/1		208/230/460/50/3		115/230/60/1		208/230/460/50/3	
<b>HORSEPOWER</b>		1/3		1/2		1/2		1/2		3/4		3/4	
<b>MOTOR TYPE</b>		Cap. Start		Cap. Start		Cap. Start		Polyphase		Cap. Start		Polyphase	
<b>CURRENT AT RATED LOAD (AMPS)</b>		8.0/4.0 A		7.3/3.6 A		8.2/4.1/4.3 A		2.0/1.9/.95 A		10.6/5.3 A		2.8/2.8/1.4 A	
<b>POWER AT RATED LOAD (WATTS)</b>		450 W		760 W		670 W		628 W		825 W		800 W	
<b>STARTING CURRENT (LOCKED ROTOR, AMPS)</b>		34.8/18.0 A		34.8/18.0 A		39.0/19.5 A		12.5/12.0/6.0 A		60.0/30.0 A		17.0/17.0/8.5 A	
<b>MIN. FULL LOAD SPEED (RPM)</b>		1725		37.0/19.7 A		1425		1725/1425 rpm		1725		1725/1425	
<b>THERMAL PROTECTOR</b>		Yes		Yes		Yes		No		Yes		No	
<b>CAPACITOR VALUE</b>		243 mfd		324 mfd		324 mfd				378 mfd			
<b>NET WEIGHT</b>		45 lbs.	20.4 Kg	51 lbs.	23.1 Kg	51 lbs.	23.1 Kg	51 lbs.	23.1 Kg	56 lbs.	25.4 Kg	56 lbs.	25.4 Kg
<b>SHIP WEIGHT</b>		47 lbs.	21.3 Kg	51 lbs.	23.1 Kg	51 lbs.	23.1 Kg	51 lbs.	23.1 Kg	60 lbs.	27.2 Kg	60 lbs.	27.2 Kg

## TA-4172

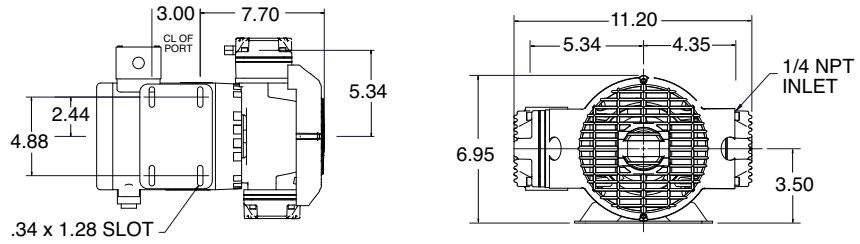
270072



# Dimensions Millimeters are in ( )

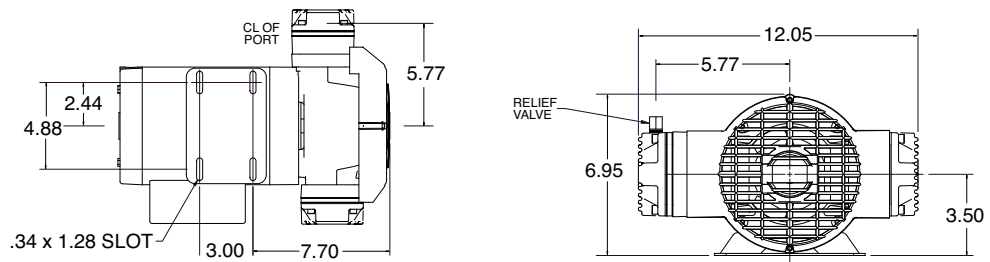
## TA-5172

270076



## TA-6172

270080



## TA-6172

270082

