

WOB-L™



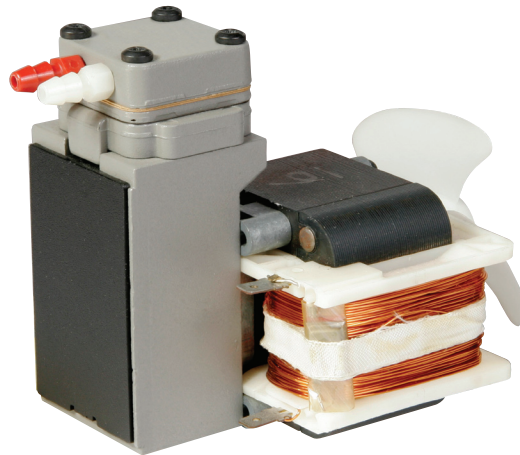
# 014 SERIES

## MODELS

Standard models  
014CA28  
014CDC20/12

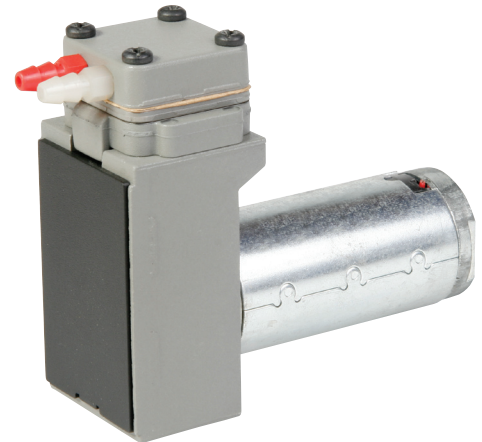
*Other models based  
on availability and  
minimum purchase.*

014CA20  
014CA24



014

014 DC



## FEATURES

- Oil-less, non-lube piston and cylinder
- Stainless steel valves
- Long-life, high performance
- Teflon®-PTFE compound piston ring
- Lightweight, diecast aluminum components
- Hard-coated aluminum cylinder for maximum heat transfer
- Balanced for smooth, low vibration operation
- Field service capability
- Barb fittings for 3/16" to 1/4" tubing
- Permanently lubricated motor shaft and connecting rod bearings
- 115 Volt, UL recognized motor and thermal protector

Consult factory for custom applications

ISO 9001  
CERTIFIED

**THOMAS**  
A Gardner Denver Product

# 014 Series Performance Data

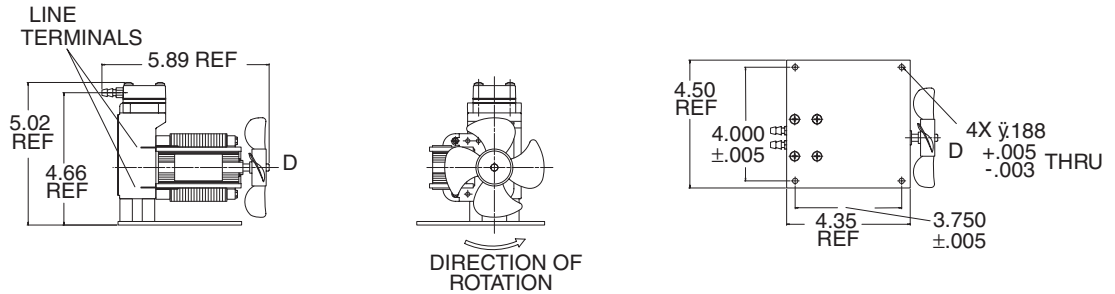
						Standard		Standard	
MODEL NUMBER		014CA20		014CA24		014CA28		014CDC20/12	
HEAD CONFIGURATION		Pressure/Vacuum		Pressure/Vacuum		Pressure/Vacuum		Pressure/Vacuum	
STROKE		.200 Inches		.240 Inches		.280 Inches		.200 Inches	
PRESSURE		Flow @ 115v		Flow @ 115v		Flow @ 115v		Flow @ 12v	
CFM @ PSI	LPM @ bar								
PSI	bar	CFM	LPM	CFM	LPM	CFM	LPM	CFM	LPM
0	0	.30	8.5	.34	9.6	.46	13.0	.39	11.0
10	.5	.26	7.7	.30	8.8	.37	11.2	.26	8.4
20	1.0	.22	6.9	.26	8.0	.32	9.8	.22	6.9
30	1.5	.18	6.0	.22	7.2	.28	8.9	.18	6.0
40	2.0	.15	5.2	.19	6.3	.26	8.0	.16	5.2
50	3.0	.12	4.0	.16	5.1	.23	7.1	.14	4.3
60	5.0	.09	2.2	.13	3.0	.22	5.0		
70	7.0	.08		.11	1.0	.18	3.3		
80		.07		.09		.17			
90		.04		.07		.14			
100				.04		.12			
<b>MAX. CONTINUOUS PRESSURE</b>		90 PSI	6.2 bar	100 PSI	6.9 bar	100 PSI	6.9 bar	20 PSI	1.4 bar
<b>MAX. INTERMITTENT PRESSURE</b>		90 PSI	6.2 bar	100 PSI	6.9 bar	100 PSI	6.9 bar	50 PSI	3.4 bar
VACUUM		Flow @ 115 v		Flow @ 115 v		Flow @ 115 v		Flow @ 12 v	
CFM @ IN. hg	LPM @ mbar (gauge)								
IN. hg	mbar (gauge)	CFM	LPM	CFM	LPM	CFM	LPM	CFM	LPM
0	0	.30	8.5	.34	9.6	.46	13.0	.39	11.0
5	-100	.25	7.7	.29	8.8	.37	11.5	.24	8.5
10	-200	.19	6.8	.23	8.0	.28	10.0	.18	6.5
15	-400	.12	4.7	.14	5.6	.19	7.0	.12	4.9
20	-600	.06	2.5	.07	2.9	.09	3.8	.06	2.5
<b>MAX. VACUUM</b>		25.6" hg	-864 mbar	25.6" hg	-864 mbar	26.0" hg	-881 mbar	25.3" hg	-858 mbar
<b>MAX. AMBIENT AIR TEMP.</b>		104° F	40°C	104° F	40°C	104° F	40°C	104° F	40°C
<b>MIN. AMBIENT START TEMP.</b>		50° F	10°C	50° F	10°C	50° F	10°C	50° F	10°C
<b>MAX. RESTART PRESSURE</b>		0 PSI	0 bar	0 PSI	0 bar	0 PSI	0 bar	50 PSI	3.5 bar
<b>MAX. RESTART VACUUM</b>		0"hg	0mbar	0"hg	0mbar	0"hg	0mbar	25.3"hg	-857 mbar
<b>MOTOR VOLTAGE/FREQUENCY</b>		115/60/1		115/60/1		115/60/1		12 v	
<b>MOTOR TYPE</b>		Shaded Pole		Shaded Pole		Shaded Pole		Permanent Magnet	
<b>CURRENT AT RATED LOAD (AMPS)</b>		2.2		2.2		2.4		3.0	
<b>POWER AT RATED LOAD (WATTS)</b>		120		125		140			
<b>STARTING CURRENT (LOCKED ROTOR, AMPS)</b>		3.4		3.4		3.4		8.0	
<b>CAPACITOR VALUE</b>									
<b>MIN. FULL LOAD SPEED (RPM)</b>		3300		3300		3200		2600	
<b>THERMAL PROTECTOR</b>		Yes		Yes		Yes		No	
<b>NET WEIGHT</b>		4.7 lbs.	2.13 kg	4.7 lbs.	2.13 kg	4.7 lbs.	2.13 kg	2.3 lbs.	1.04 kg

The information presented in this material is based on technical data and test results of nominal units. It is believed to be accurate and reliable and is offered as an aid to help in the selection of Thomas products. It is the responsibility of the user to determine the suitability of the product for his intended use and the user assumes all risk and liability whatsoever in connection therewith. Thomas Industries does not warrant, guarantee or assume any obligation or liability in connection with this information.

**NOTE:** Models pictured are representative of the series and do not represent a specific model number. Consult factory for detailed physical description.

# Dimensions

## 014CA



## 014CDC20/12

