

Welch®
Laboratory Vacuum Catalog
2005-2006

DUOSEAL® Rugged Belt-Drive Vacuum Pumps
Catalog Pages 26 & 27

ORDER ONLINE AT: www.cfpwarehouse.com or contact:

COMBINED FLUID PRODUCTS COMPANY
805 Oakwood Road, Lake Zurich, Illinois 60047
sales@combinedfluidproducts.com
www.combinedfluidproducts.com
Tel (847) 540-0054 Fax (847) 540-0513
(800) 521-2083

DUOSEAL® Vacuum Pumps

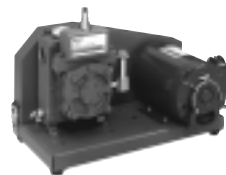
Long Service Life Due
To Low Pump RPM

In Demanding Applications Such As:

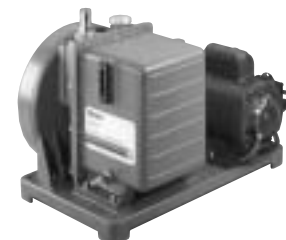
- Freeze Drying
- Concentrating
- Schlenk Line
- Degassing
- Vacuum Distillations
- Vacuum Drying



1399N-01



1400B-01



1405B-01/1402B-01

Specifications

TWO-STAGE VACUUM PUMPS¹

Welch Model	1400	1405	1402	1376	1397
Free Air Displacement					
CFM	0.9	3.2	5.6	10.6	17.7
L/min	25	90	160	300	500
Ult. Pressure, Torr(mbar) ¹	1 x 10 ⁻⁴ (0.00013)	1 x 10 ⁻⁴ (0.00013)	1 x 10 ⁻⁴ (0.00013)	1 x 10 ⁻⁴ (0.00013)	1 x 10 ⁻⁴ (0.00013)
Gas Ballast	Yes	Yes	Yes	Yes	Yes
Pump RPM	580	525	525	525	400
Motor Horsepower (watts)	1/3(250)	1/2(370)	1/2(370)	1(750)	1(750)
Oil Capacity, qt. (liters)	0.62(0.59)	2.25(2.1)	2.25(2.1)	2.5(2.4)	1.25(1.2)
Tubing Needed, I.D. in.	7/16(11)	7/16(11)	13/16(21)	13/16(21)	1-5/8(41)
Intake, Nipple Thread	3/4-20	1-20	1-20	1-20	1.75-20
Exhaust, Thread Type	3/4-20	1-20	1-20	1-20	1.75-20
Weight, lbs (kg)	58(26)	112(51)	112(51)	156(71)	205(93)
Overall Dimensions					
L in. (cm)	17.8(45.1)	20(51)	20(51)	20(51)	26(66)
W in. (cm)	9(22.9)	12(30.5)	12(30.5)	14.1(35.9)	13.7(34.8)
H in. (cm)	12.6(32.1)	15(38.1)	15(38.1)	15.4(39)	18.8(47.6)
Ship Weight, lbs (kg)	70(31.8)	132(60)	132(60)	180(81.8)	213(96.8)
Shipping Carton Dimensions L x W x H in. (cm)	20.5 x 13.8 x 14.5 (52.1 x 35.1 x 36.8)	22.5 x 15.5 x 19.5 (57.2 x 39.4 x 49.5)	22.5 x 15.5 x 19.5 (57.2 x 39.4 x 49.5)	22 x 18 x 19 (55.9 x 45.7 x 48.3)	27.3 x 18 x 22 (69.3 x 45.7 x 55.9)

Ordering Information^{3,4}

Catalog Number	1400B-01 ⁶	1405B-01 ⁶	1402B-01 ⁶	1376B-01	1397B-01
Wired for 115V, 60Hz, 1 Ph with N. American 115V Plug					
Wired for 230V, 60Hz, 1 Ph with N. American 230V Plug	1400C-01	1405C-01	1402C-01	-----	-----
Wired for 220V, 50Hz, 1 Ph w/Cont. Euro. (Schuko) Plug	1400C-02	1405C-02	1402C-02	1376C-03	1397C-03
Explosion Proof Motor, 115V, 60Hz	1400W-01 ⁵	1405W-01 ⁵	1402W-01 ⁵	-----	-----
3-Phase Motor 230V, 460V, 60Hz	-----	-----	1402M-01	1376M-01	1397M-01

Notes:

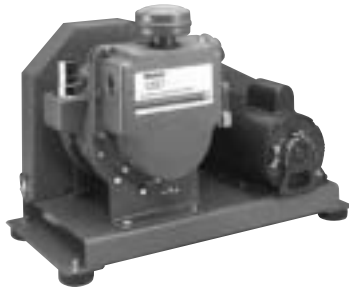
1. Two-stage pumps should not be operated continuously at pressures above 10 Torr. Ultimate pressure measured with a trapped McCleod gauge.
2. One-stage pumps should not be operated continuously at pressures above 50 Torr.

3. All 115V and 230V single phase motors include thermal overload protection.
4. Models 1400C-02, 1405C-02 and 1402C-02 provided with CE marking.

Vacuum Pumps



1376B-01



1397B-01/1374B-01

ONE-STAGE VACUUM PUMPS² w/o plate w/bell jar plate

1374	1399	1399N
23	1.2	1.2
650	35	35
1 x 10 ⁻⁴ (0.00013)	1.5 x 10 ⁻² (0.019)	1.5 x 10 ⁻² (0.019)
Yes	No	No
510	750	750
1-1/2(1120)	1/3(250)	1/3(250)
1.25(1.2)	0.5(0.47)	0.5(0.47)
1-5/8(41)	7/16(11)	7/16(11)
1.75-20	3/4-20	3/4-20
1.75-20	3/4-20	3/4-20
220(100)	51(23)	63(28.6)
26(66)	17(43.2)	17(43.2)
13.7(34.8)	9(22.9)	9(22.9)
18.8(47.6)	10(25.4)	10(25.4)
215(97.7)	62(28.2)	74(33.6)
27.3 x 18 x 22 (69.3 x 45.7 x 55.9)	20.5 x 13.8 x 14.5 (52.1 x 35.1 x 36.8)	20.5 x 13.8 x 14.5 (52.1 x 35.1 x 36.8)

1374B-01 ⁵	1399B-01	1399N-01
-----	-----	-----
1374C-02 ⁵	1399C-02	-----
-----	-----	-----
1374M-01	-----	-----

- Conduit wiring installation required. No cord, plug or switch provided.
- CSA approved models are 1400B-80, 1405B-80 and 1402B-80.

Accessories and Oil

Exhaust Filter

A replaceable filter element captures oil mist from the exhaust port of the pump and reduces pump noise.

Pump Model	Cat. No.
1399, 1400	1417
1376, 1402, 1405	1417P-10
1397, 1374	1417P-20

(See page 31 for a complete list of filters)



Exhaust Oil Recycler

Use when pumping continuously above 1 Torr. Captures oil mist from the pump and returns it to the pump via a gas ballast connection.

Pump Model	Cat. No.	CFM
1400	1416H-01	3
1376, 1402, 1405	1416C-01	8

(See page 31 for a complete list of filters)



Dry Ice/Liquid Nitrogen Trap

Recommended to protect pump from condensable vapors. Use either dry ice slurry or LN2 in the 3 quart center well. Accepts 7/16" I.D. Hose.

Pump Model	Cat. No.
1400, 1405, 1402, 1376, 1399	1420H-14

(See page 32 for Trap Selection Table)



DuoSEAL[®] Vacuum Pump Oil

Tested to high vacuum levels, this oil meets rigid requirements for vapor pressure, stability, and viscosity.

Size	Cat. No.
Quart	1407K-11
Gallon	1407K-15
5 Gallon	1407K-20
55 Gallon	1407K-25



Gold Vacuum Pump Oil

Specially formulated oil for challenging applications. This highly saturated hydrocarbon oil is resistant to breakdown at higher temperature and is highly stable in chemical environments.

Size	Cat. No.
Liter	8995G-11
Gallon	8995G-15
5 Gallon	8995G-20
55 Gallon	8995G-25

